



5700 / 5800 Series

Hot-Water Pressure Washers

#1 in North America for High-Pressure Cleaning Equipment

For Wash Bay Installations



Heater coil carries a 5-year warranty

Stainless steel coil skin provides extra durability to withstand overspray

Controls for the pump, burner and detergent are easily accessible.

Removeable **control panel** provides access to **adjustable temperature control** and Smart Relay for secured control of desired operating positions.

Remote ready for operation in wash bays.

Relief valve protects the machine and user from thermal expansion

Upright, vertical coil delivers high efficiency and maintains constant temperature using oil, natural gas or liquid propane

Adjustable upstream detergent injection ensures high-pressure sudsing for better cleaning

Elevated gas valve protects valve from water damage, and is located at the back corner for easy installation and service



Burner assembly pivots down to allow access to burner ring and pilot assembly for maintenance

Insulated Hotsy trigger gun and insulated wand with ergonomic, adjustable side handle

Sleek side and front panels are easily removed for maintenance and service access

Quick disconnect stainless steel nozzles are color coded for quick changing between 0°, 15°, 40° spray nozzles

50-ft. length of high-pressure hose for easy maneuverability around a large working area



FEATURES

- Oil, Natural Gas Fired or optional LP Fired
- High Flow Rate 7.8 or 9.5 GPM @ 3000 or 2500 PSI
- Electric Motor
- Belt Drive Pump

20 HP Baldor 208V, 230V, 460V or 575V, 3PH electric motor is OPD (open drip-proof) and comes with thermal overload protection and manual reset

www.Hotsy.com

The 5700 & 5800 Series is designed for the toughest, industrial cleaning jobs.



Features:



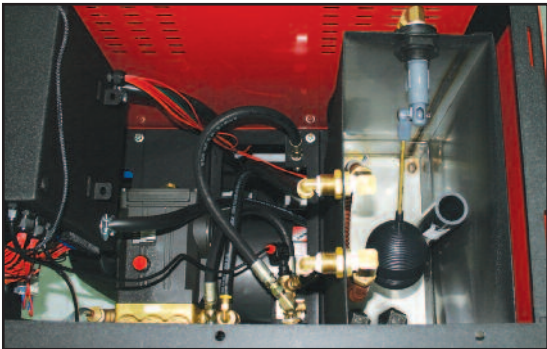
Vertical banded belt provides extended life and reduced maintenance costs by eliminating multiple belts that stretch at different rates. New belt tensioner provides constant tension and makes servicing and maintenance of the belt a breeze.



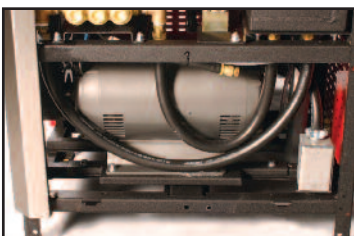
Large frame Hotsy belt-drive pump features NESTechnology with U-Seals for 3 times longer pump life.



To eliminate cavitation, both sides of the pump are fed from the 10-gallon float tank that provides "flooded suction". The pump also has an oil drain, allowing for easy oil changes.



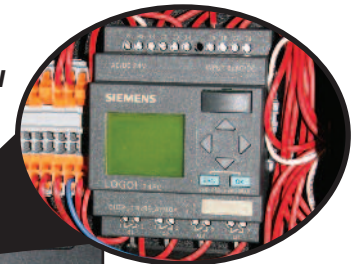
Large 10-gallon polyethylene float tank with cool-down pump by-pass loop to significantly reduce potential pump damage from the operator regularly running the machine in by-pass mode.



Motor is mounted to **slide out rails** for easy removal



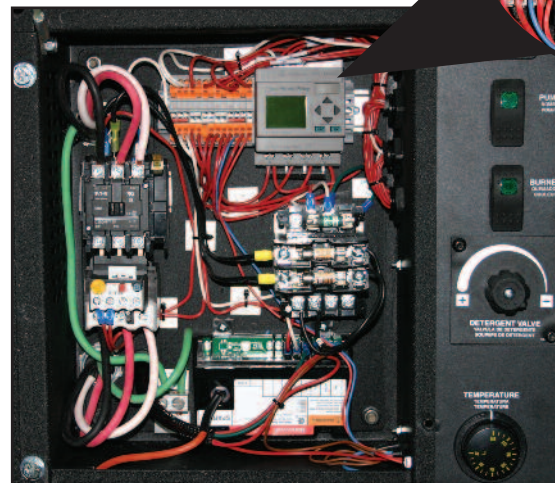
Detachable panel allows access to **wiring and control panel hub**



Smart Relay Control provides complete control over run time, auto start/stop and time delay shut down functionality.

Wire displacement terminals eliminate loose wiring.

Remote Ready





Applications

Vehicle Cleaning

The Hotsy 5700 and 5800 Series pressure washers are **ideal for heavy-duty vehicle cleaning**. Applications include fleet operators, construction, trucking companies, city buses, or other industries where vehicles need to be washed.

Manufacturing

The Hotsy 5700 and 5800 Series pressure washers are also perfect for **manufacturing facilities** where goods need to be washed during the production process. Installed as an "in-plant" system, the Hotsy 5700 or 5800 series models can be positioned to use the existing power supply and can be vented for exhaust disposal.

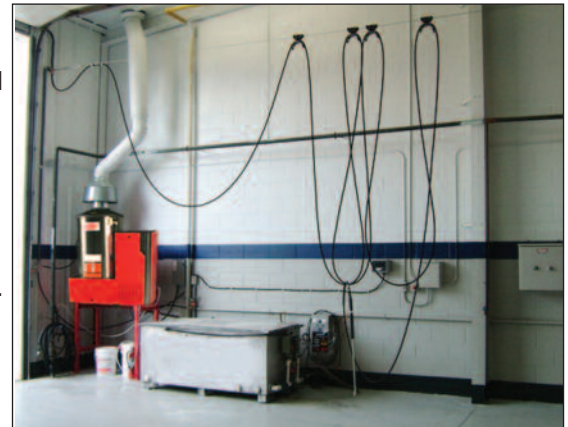


Total System Solution

Hotsy stationary pressure washers, like the 5700 and 5800 Series models, are one component in the **total system solution** that Hotsy offers. Cleaning systems consist of a pressure washer connected to water, a power source and fuel supply, which pushes the water through a trolley system suspended above, allowing for easy cleaning around a vehicle.

Multiple Guns

The operation of the pressure washer can be controlled by optional remote control(s) located in the washing area. Optional hose reels can be mounted on the walls to keep the hoses secure and up off of the floor, away from damage. Multiple guns can be used simultaneously for washing, without diminishing the pressure (the flow is halved between the two guns but each gun still has a high flow rate).



Cost-Effective Cleaning

Detergent can be stored in a drum or tote under the pressure washer. Utilizing a detergent proportioner, concentrated detergent is automatically mixed at a pre-determined ratio to be run through the pressure washer. This optimizes cleaning while reducing detergent use and cost. Finally, optional water recycling equipment (like Water Maze™ water treatment systems) can be integrated into the system to treat wash water for sewer discharge or reuse.

Learn more about system installations - watch our Wash Bay video at www.hotsy.com/Videos.aspx

Spend time with your local Hotsy Expert

Hotsy has more than 130 local distributors in North America, all factory-trained to properly evaluate your high-pressure cleaning needs. Over 80% of Hotsy's distributors have been supporting Hotsy systems for more than 20 years. This seasoned network of local application and installation service professionals will ensure you get the safest, most effective and most efficient cleaning solution for your cleaning needs.



5700 / 5800 SERIES Hot Water Pressure Washers

■ Oil or Natural Gas-Fired

■ 7.8 or 9.5 GPM / 2500 to 3000 PSI

■ 1725 Motor RPM

■ ETL-Certified

Ten powerful models, designed for tough, industrial cleaning.

SPECIFICATIONS										BELT DRIVE	
MODEL	GPM	PSI	HP	VOLTS/PH	AMP	FUEL	BTU/HR	PUMP MODEL	PORTABILITY	HOSE	SHIP WT (lbs)
5730SS	7.8	3000	20	230/3	44	Oil	768,000	HHC950L.1	N/A	50'	1,260
5732SS-208	7.8	3000	20	208/3	48	NG	720,450	HHC950L.1	N/A	50'	1,260
5732SS	7.8	3000	20	230/3	42	NG	720,450	HHC950L.1	N/A	50'	1,260
5733SS	7.8	3000	20	460/3	23	Oil	768,000	HHC950L.1	N/A	50'	1,260
5735SS	7.8	3000	20	460/3	21	NG	720,450	HHC950L.1	N/A	50'	1,260
5736SS	7.8	3000	20	575/3	16	NG	720,450	HHC950L.1	N/A	50'	1,260
5832SS	9.5	2500	20	230/3	42	NG	939,890	HX1025L.1	N/A	50'	1,275
5832SS-208	9.5	2500	20	208/3	48	NG	939,890	HX1025L.1	N/A	50'	1,275
5835SS	9.5	2500	20	460/3	21	NG	939,890	HX1025L.1	N/A	50'	1,275
5836SS	9.5	2500	20	575/3	16	NG	939,890	HX1025L.1	N/A	50'	1,275

SS = Stainless Steel

Dimensions: 51"L x 31"W x 63.4"H

OPTIONS

- Detergent container bracket - small shelf holds 5-gallon detergent bucket
- Pump Upgrade - KE Pratisoli
- LP option - converts natural gas models to LP-Fired

Hotsy Accessories customize your application for top performance



360° Pivot and non-pivot hose reels mount to a wall and keep hose neatly stored and off the ground



Remote control box allows pressure washer to be located in one room, controls and wands in another area

Clean better with Hotsy detergents



Hotsy pressure washers clean best when matched with specially formulated Hotsy detergents. More than 40 liquids and powders meet every cleaning

need imaginable. Nearly all contain Hotsy's exclusive advanced-formula HCC additives to help prevent scale build-up and to fight corrosion in your equipment. Most Hotsy detergents are USDA and Canadian Agriculture approved. All are highly concentrated, so a little goes a long way.

Inlet water solenoid (not pictured) shuts off water to the washer when not in use.



Add soap remotely with a proportioner



Heavy-duty high-pressure hoses in lengths up to 150-ft.

Distributed by:

hotsy *Nothing Cleans Like a Hotsy!*

Tel: (800) 525-1976 Fax: (888) 880-9631
 www.Hotsy.com email: info@Hotsy.com
 P/N 8.914-183.0 Effective 1/11 Specifications and product descriptions subject to change without notice. ©2011 Hotsy



NOTE: We are constantly improving and updating our products. Consequently, pictures, features and specifications in this brochure may differ slightly from current models. Flow rates and pressure ratings may vary due to variances allowed by manufacturers of our machine components. We attempt to keep our machine performance within ± 5% of listed specifications.